



Butterworth Road, Sutton In Ashfield, NG17

£1,100 Per Month

* Rent Free – Limited Time Offer*

Location, Travel & Local Community

Welcome to Portland Fields Sutton In Ashfield - a charming semi-detached house that could be your next dream home!

Situated in a peaceful neighbourhood, this house offers a tranquil retreat from the hustle and bustle of everyday life.

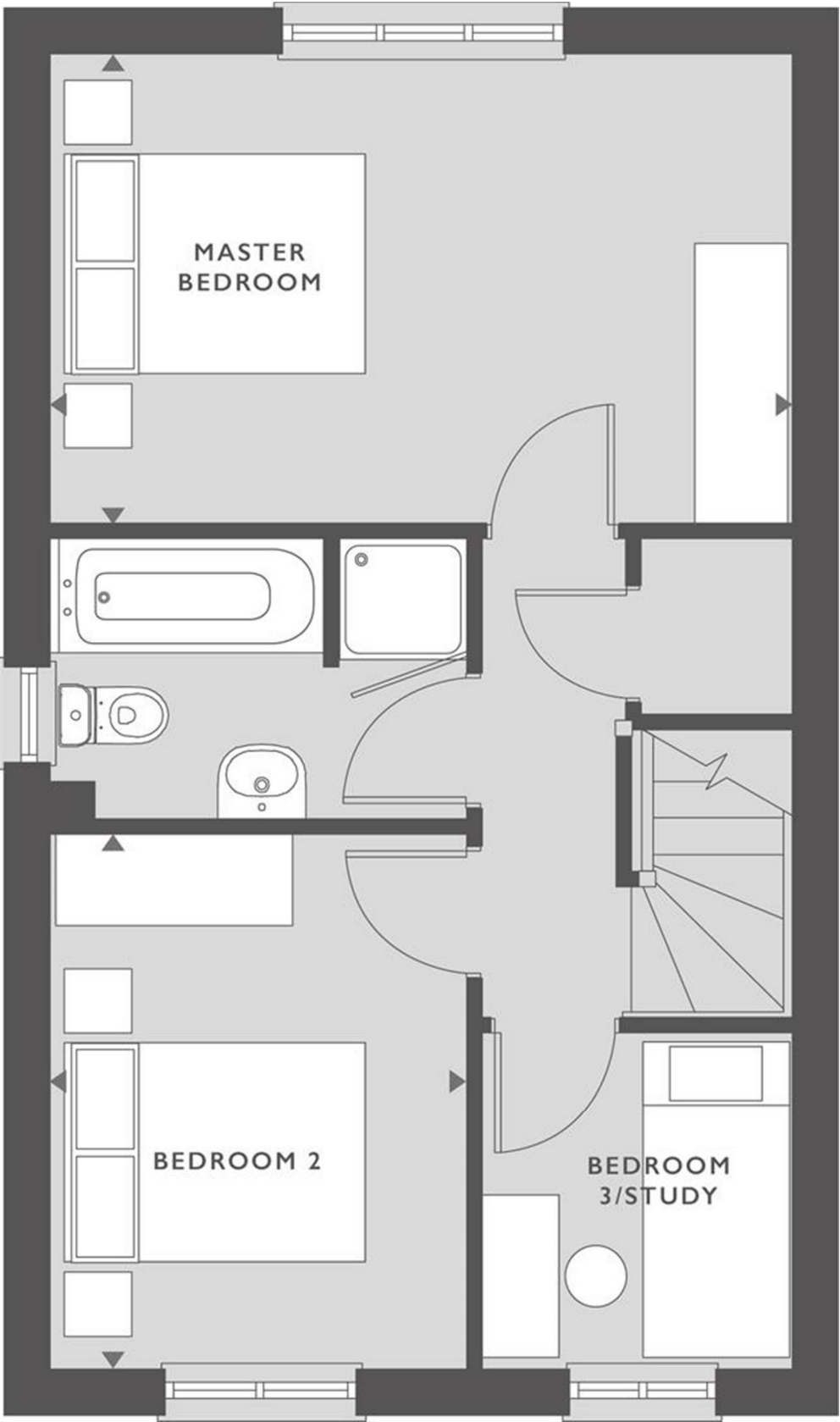
Education & SCHOOLS NEARBY

The area provides excellent opportunities for children aged 4-18, with a range of schools ranging from Kindergartens all the way up to Primary schools all within 1.5 miles of the site. Making the school run quick and easy.

About Your Home - THE ASHTON

The Ashton+ at Portland Field offers modern living with a stylish open-plan living and dining area that boasts French doors leading to the rear garden, creating a bright and inviting space for entertaining or relaxing. Upstairs, you'll find two spacious double bedrooms, along with a versatile third bedroom perfect for use as an office. The contemporary family bathroom is beautifully designed with a separate shower cubicle and finished with elegant Porcelanosa tiles. For added convenience, the property includes a downstairs WC. Ideal for comfortable and flexible family living.





Energy Efficiency Rating		Environmental Impact (CO ₂) Rating	
Score	Band	Score	Band
96	A	96	A
81-95	B	81-95	B
69-80	C	69-80	C
55-68	D	55-68	D
41-54	E	41-54	E
29-40	F	29-40	F
13-28	G	13-28	G